



1 & 2 BHK HOMES | समृद्ध जीवनाचा आरंभ

श्री

सुरुवात सुखी जीवनाची !

सुरुवात पहिल्या घराची !

सुरुवात नवीन भविष्याची !

सुरुवात कुटुंबाच्या सुरक्षेची !

सुरुवात अस्तित्व निर्माण करण्याची !

॥



सुंदर गृहरचना



तन्य इंजिनियर



उत्कृष्ट अॅमेनिटिज



कुशल कारीगर



उत्कृष्ट बांधकाम



उच्च दर्जेदार मटेरियल



nexus®
Vision • Innovation • Integrity

23
वर्षे अनुभव

Nexus Group brings the philosophy of Vision, Innovation & Integrity in real estate segment. Every project of Nexus Group combines 23 years of Excellence, Trust, and Quality Construction with a commitment to new designs and technology. Our Past Projects have not only given people their dream home but have also helped them to enrich their lives. In recent years Nexus Group has spread their wings in all major residential suburb of PCMC. So, be a part of Nexus Family and upgrade your Life to a new Level!



श्रीसिड्डी

1 & 2 BHK HOMES | समृद्ध जीवनाचा आरंभ

सुंदर, कलात्मक, संपूर्ण अशी वास्तू!



सुख, समृद्धी, शांतता लाभलेली वास्तू !

1 & 2 BHK HOMES | समृद्ध जीवनाचा आरंभ



श्ररसिड्डी



लख लख चंदेरी तेजाची न्यारी दुनिया
झळाळती ... आनंद आपल्या जीवना!

1 & 2 BHK HOMES | समृद्ध जीवनाचा आरंभ



पूर्ण
संपूर्ण !



श्रीरेसिडन्सी

1 & 2 BHK HOMES | समृद्ध जीवनाचा आरंभ



शाॅप्स

शून्य मिनिटांच्या अंतरावर सर्व काही सुख सुविधा...





कम्युनिटी हॉल



TRAILNERS

tempo
motivation
focus
stamina
exercise
inspire
lift
Pilates
FITNESS

फिटनेस सेंटर



क्लब हाऊस

AMENITIES

ENTRY:

- Attractive Entrance Gate with Security cabin
- Attractive & Pleasant Entrance Lobby
- Nameplate for each flat
- Intercom connection to each flat

INTERNAL ROADS:

- Internal roads with trimix / block finish
- Street Lights with LED / CFL Fittings

● SECURITY:

- 24x7 Security

ENVIRONMENTAL RESPONSIBILITY:

- Rainwater Harvesting
- Solar Water System as per norms
- Garbage Chute
- Sewage Treatment Plant (STP)
- Organic Waste Control (OWC)

GARDEN:

- Beautifully designed Landscaped Garden
- Party Lawn
- Activity Stage
- Gazebo

COMMON AMENITIES:

- Club House with Multi-purpose Court
- DG Backup for all common areas
- Fire Fighting System
- Letterbox
- Energy Efficient Common Lighting
- Sit-out for Senior Citizens
- Gym with Indoor Games
- KID'S PLAY AREA
WITH PLAY EQUIPMENT'S
- JOGGING TRACK

SPECIFICATIONS

STRUCTURE

- R.C.C. frame structure with specifications as per latest building code.
- Masonry & Plaster : 6" external wall and 4" internal wall
- External plaster will be sand faced and internal areas will be Gypsum finish.

FLOORING

- 24"X24" or 32"X32" **Double Charged Vitrified Tiles** in all rooms with skirting.
- Mat/ Anti skid finish tiles for all attached terrace & all bathrooms / toilets.

KITCHEN

- Black Granite top kitchen platform with stainless steel sink and glazed / designer tiles upto lintel level and provision for exhaust fan.

WATER SOURCES

- Provision of overhead and underground water tank with more than adequate capacity.

ELECTRICAL

- Concealed wiring with standard ISI make wires and switches with sufficient electric points.

DOORS

- All doors will be flush door with decorative laminate sheet having standard fittings.
- The door eye will be provided on main door.

LIFT

- Schindler or Kone or Otis make only

WINDOWS

- Powder coated aluminium sliding windows with mosquito net and safety grills.

PLUMBING

- Concealed plumbing with hot and cold water arrangement in bathroom with shower fixtures.
- CP fittings of **Kohler, Jaquar, Parryware** or equivalent brand.

PAINTING

- Oil bond distemper paint in all rooms.
- Water resistant paint on external walls.

श्रीसिड्डी

1 & 2 BHK HOMES | समृद्ध जीवनाचा आरंभ





1 & 2 BHK HOMES | समृद्ध जीवनाचा आरंभ

1 BHK

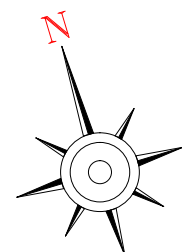
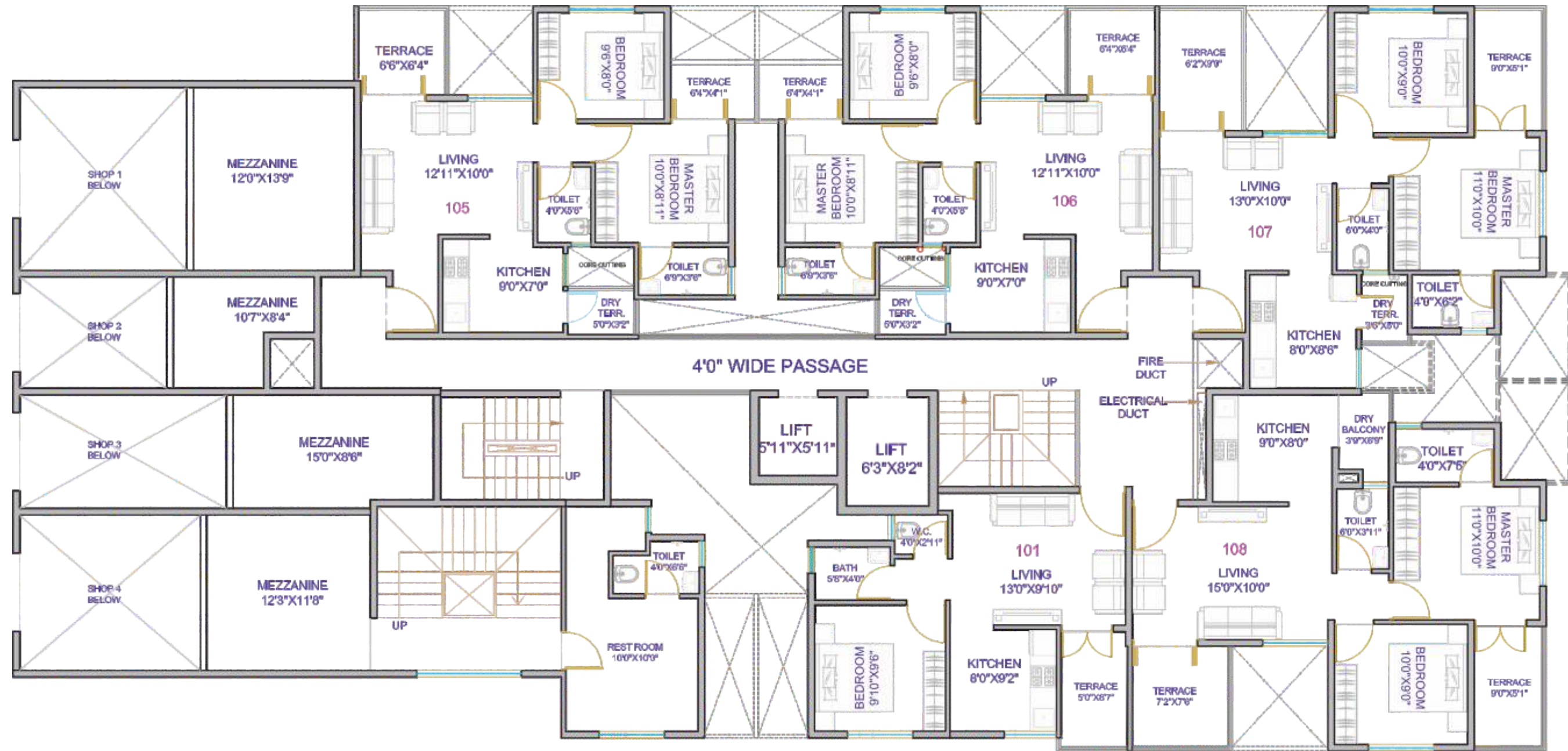
- A** Entry
- B** Living Room
- C** Bedroom
- D** Kitchen
- E** Common Toilet
- F** Attached Toilet
- G** Terrace
- H** Dry Terrace



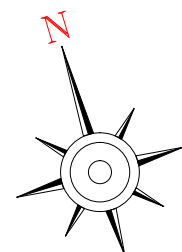
2 BHK

- A** Entry
- B** Living Room
- C** Master Bedroom
- D** Attached Toilet
- E** Attached Terrace Bedroom
- F** Kitchen
- G** Common Toilet
- H** Terrace
- I** Dry Terrace
- J** Bedroom

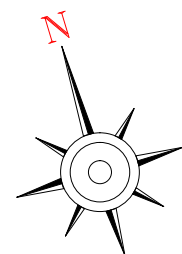
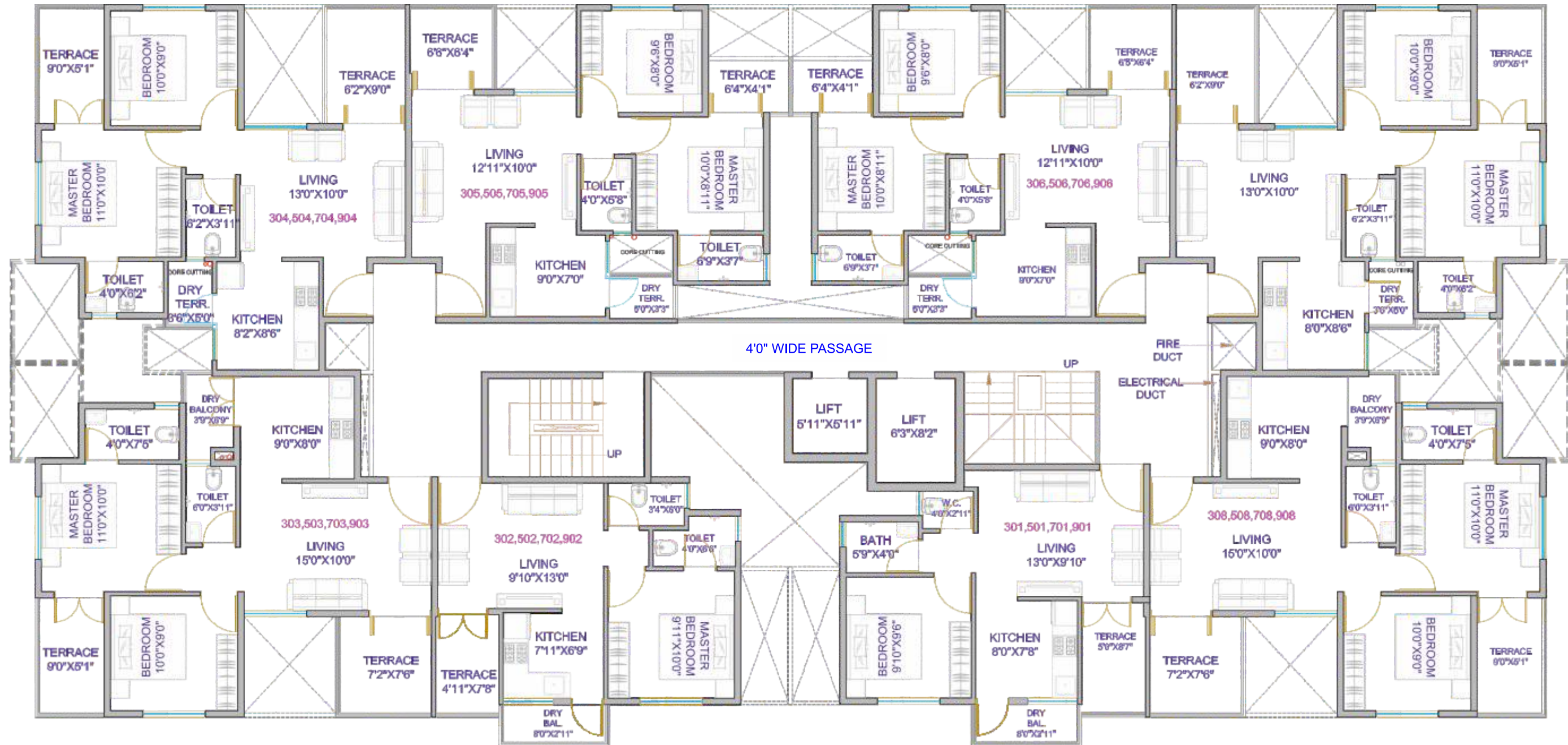




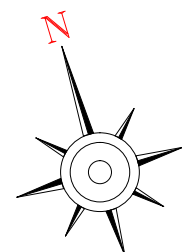
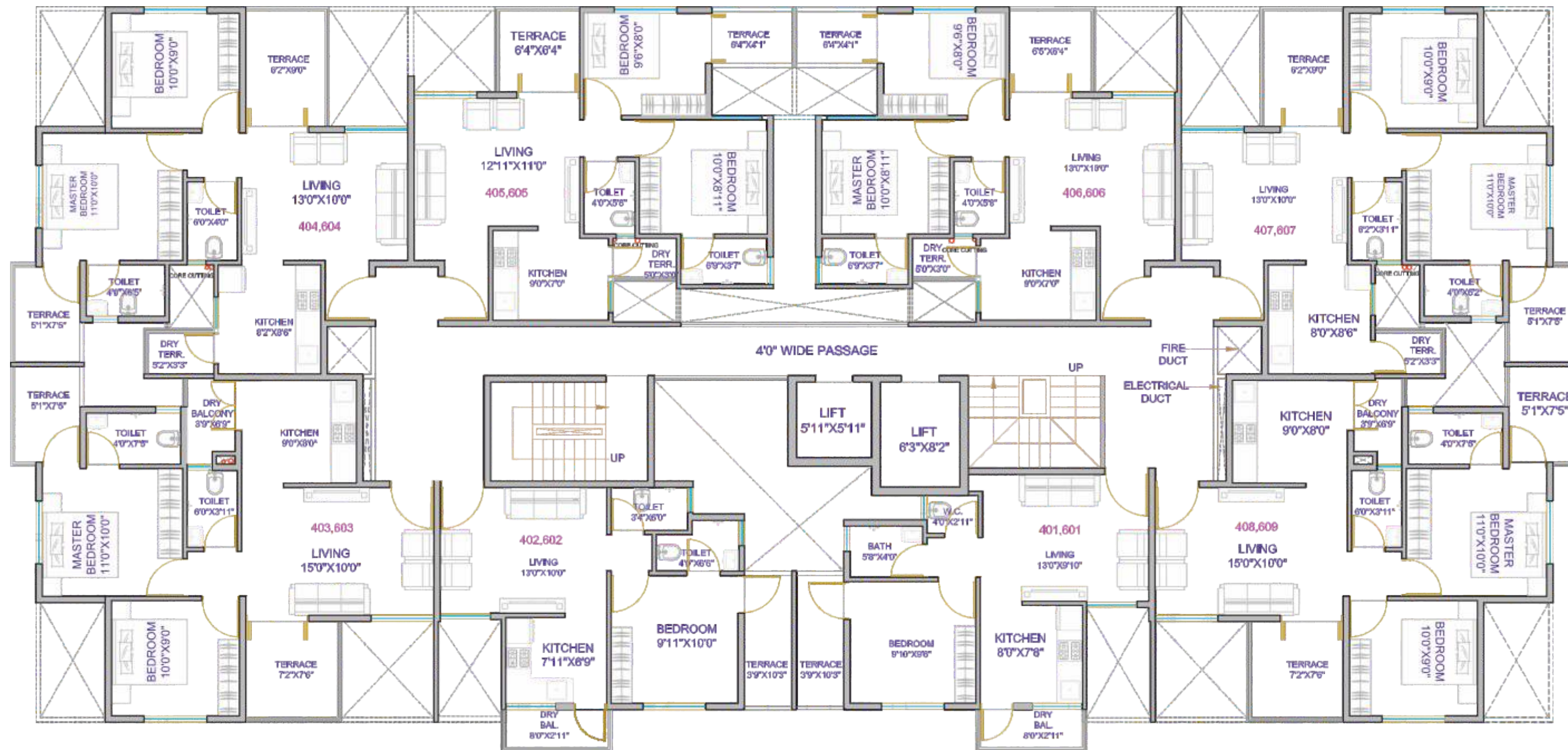
WING A
1ST FLOOR PLAN



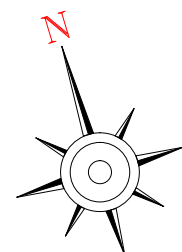
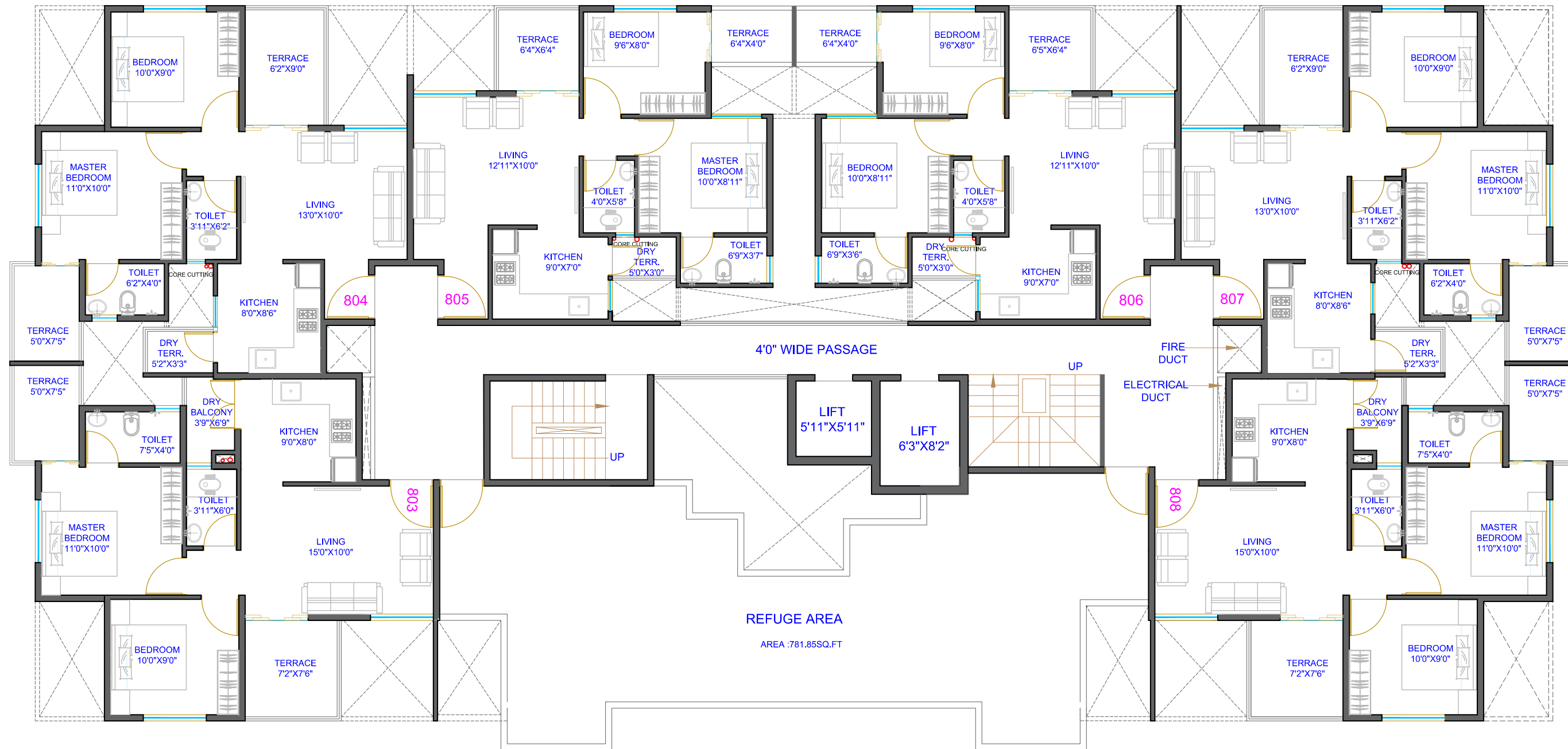
WING A
2ND FLOOR PLAN



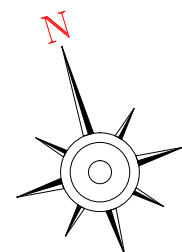
WING A
3RD, 5TH, 7TH & 9TH FLOOR PLAN



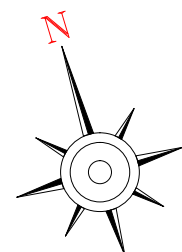
WING A
4TH & 6TH FLOOR PLAN



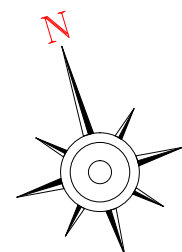
WING A
8TH FLOOR PLAN



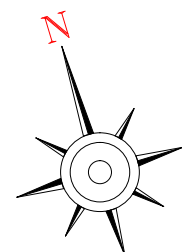
WING A
10TH FLOOR PLAN



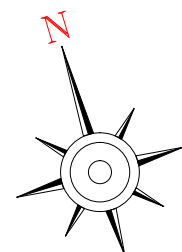
WING B
1ST FLOOR PLAN



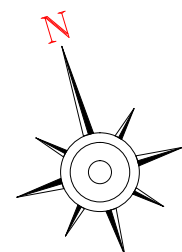
WING B
2ND, 4TH, 6TH FLOOR PLAN



WING B
3RD, 5TH, 7TH & 9TH FLOOR PLAN

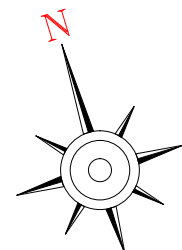
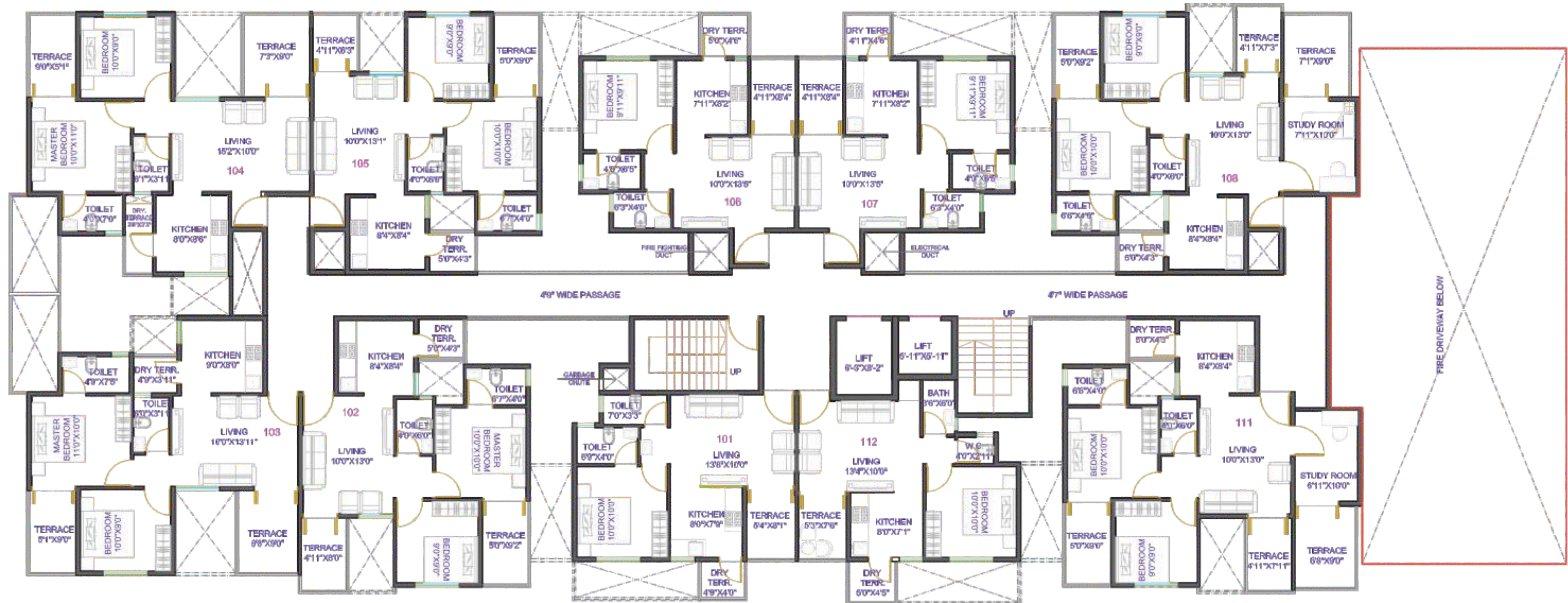


WING B
8TH FLOOR PLAN

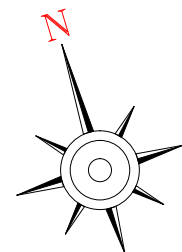
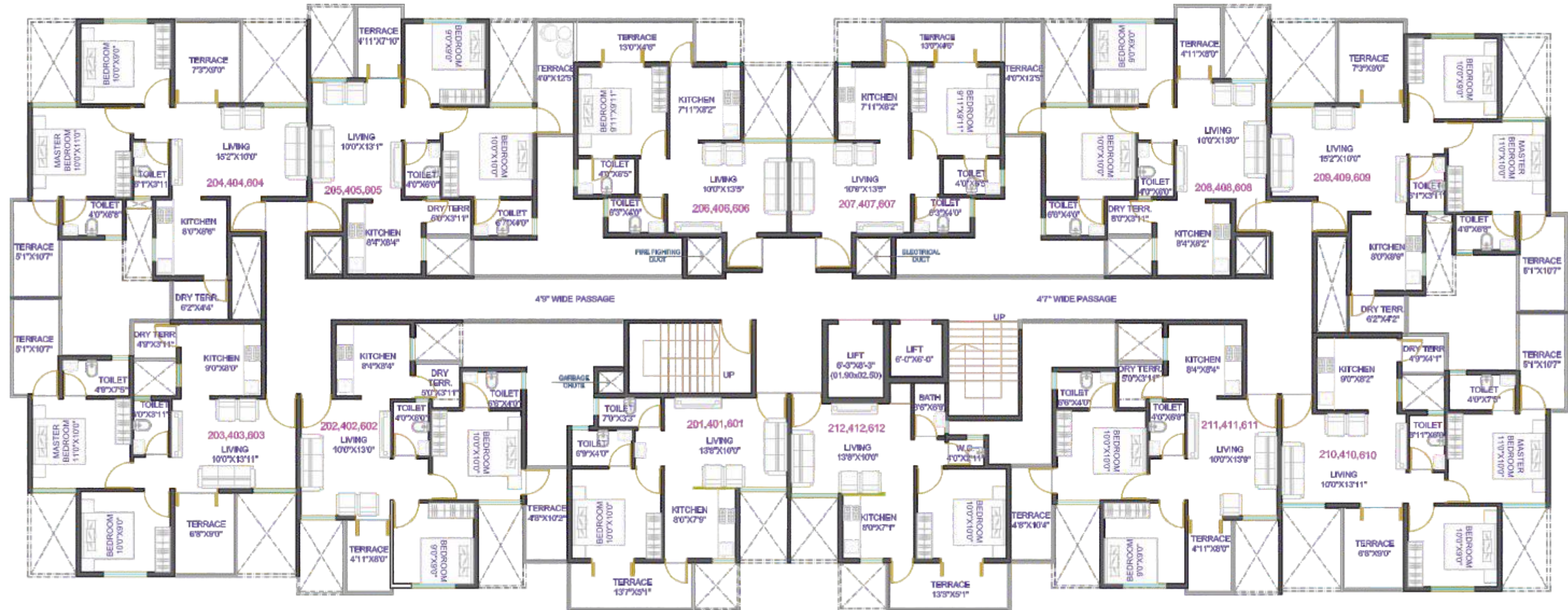


WING B

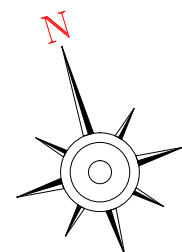
10TH FLOOR PLAN



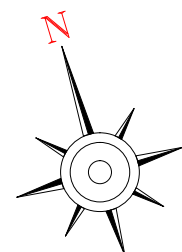
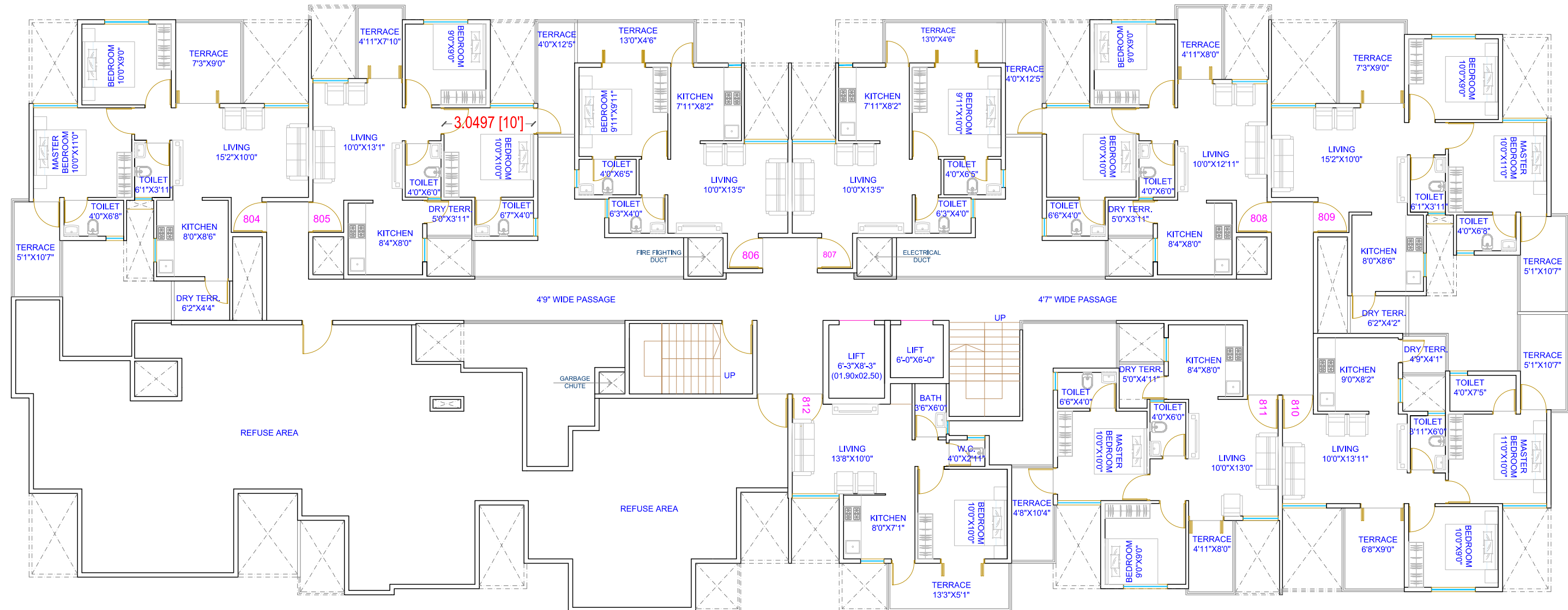
WING C
1ST FLOOR PLAN



WING C
2ND 4TH 6TH FLOOR PLAN



WING C
3RD, 5TH, 7TH & 9TH FLOOR PLAN



WING C

8TH FLOOR PLAN

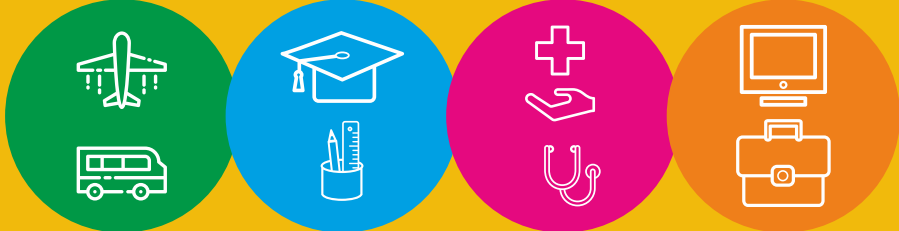


श्रीरिड्जी

1 & 2 BHK HOMES | समृद्ध जीवनाचा आरंभ

NEARBY KEY LOCATIONS

KEY PLACES



HOSPITALS:

- Sainath Hospital:----- 10 mins
- SDH Hospital:----- 10 mins

MALLS/RETAIL MARKET

- D-Mart, Moshi:-----5 mins
- Spine City Mall:-----10 mins
- Prasanna Gold Fields Complex:----- 10 mins
- Big Bazaar Chinchwad: -----15 mins

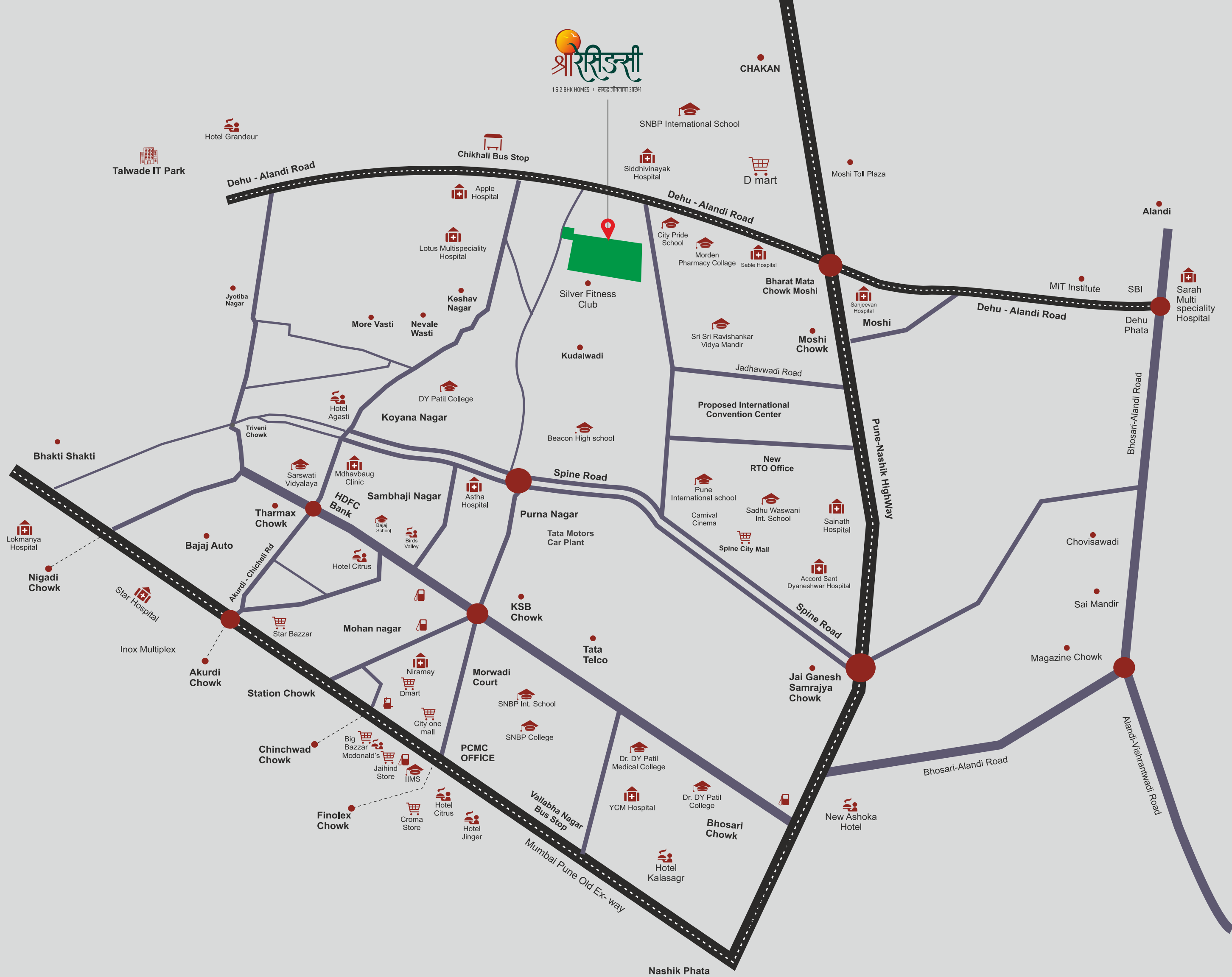
SCHOOLS

- City Pride School:-----5 mins
- Sadhu Vaswani International School:-----10 mins
- AHP School: -----10 mins
- Vishwakalyam English School: -----10 mins

IT PARKS /MIDC:

- Talawade IT Park: -----10 mins
- Bhosari MIDC:----- 15 mins
- Chinchwad MIDC:----- 20 mins
- Chakan MIDC: -----30 mins
- Hinjewadi IT Park: -----30 mins

- Spine Road:-----5 mins
- Chikhali Bus Stop:-----5 mins
- Proposed ICC: -----10 mins
- Tata Motors: -----10 mins
- Pune Nashik Highway: -----10 mins
- Telco Road:----- 10 mins
- KSB Chowk:----- 10 mins
- Moshi:----- 5 Mins
- Thermax Chowk-----15 mins
- Chinchwad-----15 mins
- Mumbai Pune Highway-----15 mins
- Nigdi-----15 mins
- Akurdi----- 20 mins
- Nashik Phata----- 20 mins





1 & 2 BHK HOMES | समृद्ध जीवनाचा आरंभ



registration number
maharera.it.mahaonline.gov.in **P52100021841**

A PROJECT BY



SITE ADDRESS:

Sree Residency, Gat No.271, Near Silver
Fitness Club, Jadhavwadi, Chikhali, Pune-412062.



Email: shreeresidency@nexuspune.in



7373 37 8585



www.nexuspune.in